

NOW AVAILABLE  
TO ORDER ONLINE



---

# Cloister Uniforms Ltd

---

[www.cloister-uniforms.co.uk](http://www.cloister-uniforms.co.uk)

Order 10 or more items and receive **FREE CARRIAGE!**  
(UK Only) Price on request for Ireland and Scilly/Scottish/Channel Islands



**X**TREME  
**S**TRETCH

Every Day Scrubs  
**EDS**  
SIGNATURE



Dickies Xtreme	3 – 5
Dickies EDS	6 – 8
Dickies Industrial	9
Cherokee Core Stretch	10 – 12
Cherokee Revolution	13 – 16
Ladies Range	17 – 21
Mens Range	22 – 23
Auxiliary/Leisurewear/Accessories	24 – 29
Size Charts/Personalisation/Returns	30 – 31

We are proud to announce we have been selected to be one of the three UK distributors of the Dickies, Cherokee, Heartsoul and Elle range of medical apparel, alongside the Cloister Range we feel we have one of the most comprehensive ranges of medical apparel, available in the UK.

The front of this year's brochure shows you the range which we have already started stocking, more colours and styles will also be added to our brand new website launching soon. These lines represent the latest in stretch technology, combining comfort, lightweight, breathable, easy care material with no need to sacrifice strength and durability. If you require something not shown in the brochure please contact us as we have access to all available lines in the brands above.

In the second half of our catalogue you will find all our traditional and best-selling tunics, trousers and dresses, complimented with our leisure range. Again full access to our leisurewear catalogue will be available on our website.

### Looking for something different?

Contact our friendly sales team on 01752 345346 or email [sales@cloister-uniforms.co.uk](mailto:sales@cloister-uniforms.co.uk) with your requirements

### Bespoke service also available

Customise our garments to suit your needs! Contact us for more details



Visit [www.cloister-uniforms.co.uk](http://www.cloister-uniforms.co.uk)  
to see the huge range of items we have available



### Cloister Uniforms Ltd

9B Meadow Close, Langage Industrial Estate, Plympton, Plymouth PL7 5EX  
Tel: 01752 345346 Fax: 01752 345090 Email: [sales@cloister-uniforms.co.uk](mailto:sales@cloister-uniforms.co.uk)

**82851**

## Dickies Xtreme Stretch 4 way stretch V-Neck Top

Front patch pockets, mobile phone pocket  
includes a self tab with utility D-ring

Front princess strapping just above front vents,  
back princess seams to add shape

Wash and wear, 4 way stretch material, super soft, cool to wear

Fabric: 75% Polyester, 21% Raylon, 4% Spandex Twill

Sizes: XS - 2XL standard stock. 2XS, 3XL - 5XL special order

Length: Centre Back 26"



Black



Navy



Light Pewter



Royal Blue

**DK 020**

## Mid Rise Drawstring Trousers

2 Front, 2 cargo, 2 back pockets, utility D-ring

Signature tonal woven label and side vents

Wash and wear, 4 way stretch material, super soft, cool to wear

Fabric: 75% Polyester, 21% Raylon, 4% Spandex Twill

Sizes: XS - 2XL standard stock. 2XS, 3XL - 5XL special order

Leg length: Reg 30.5", Short 2XS-3XL 28", Tall XS-2XL 33.5"



Black



Navy



Pewter



Royal Blue





**85956**

## Dickies Xtreme Stretch Mock Wrap Top

---

3 patch pockets, a utility D-ring and decorative logo eyelet trim

---

Front yoke, back princess seams to add shape and side vents

---

Wash and wear, 4 way stretch material, super soft, cool to wear

---

Fabric: 75% Polyester, 21% Raylon, 4% Spandex Twill

---

Sizes: XS - 2XL standard stock. 2XS, 3XL - 5XL special order

---

Length: Centre Back 26.5"

---



Black



Navy



Pewter



Royal Blue

**82310** 

## Dickies Xtreme Stretch 4 Way Stretch Snap Front Warm-Up Jacket

---

Patch pockets, Mobile phone pocket with snap tab detail

---

Crew neck, snap front warm-up jacket, front and back princess seams, back belt

---

Wash and wear, 4 way stretch material, super soft, cool to wear

---

Fabric: 75% Polyester, 21% Raylon, 4% Spandex Twill

---

Sizes: XS - 2XL standard stock. 3XL - 5XL special order

---

Length: Centre Back 26.5"

---



Black



Navy

**XTREME  
STRETCH.** 81910

## Mens V Neck Top



Chest pocket with a D-ring, 1 pocket on left sleeve with pen holding self loops

Front and back yokes, set-in sleeves, multi needle topstitching, side panels

Wash and wear, 4 way stretch material, super soft, cool to wear

Fabric: 75% Polyester, 21% Raylon, 4% Spandex Twill

Sizes: S - 2XL standard stock. 3XL - 5XL special order

Length: Centre Back 29.5"



Light Pewter



Black



Navy

**81210** **XTREME  
STRETCH.**

## Men's Zip Fly Pull-On Trouser

Cargo pockets with hook/loop closure, slash pockets, mobile phone and back pocket

Elastic waist, Belt loops, zip fly with button at waist

Wash and wear, 4 way stretch material, super soft, cool to wear

Fabric: 75% Polyester, 21% Raylon, 4% Spandex Twill

Sizes: S - 2XL standard stock. 3XL - 5XL and special order

Leg length: Reg 31.5"



Black

Navy

Pewter



**HC10506**

## Dickies Unisex Multi Hip Pocket Tunic

2 roomy hip pockets

Side vents for comfort

Hard wearing poly/cotton

Fabric: 65% Polyester 35% Cotton, 145gsm

Sizes: XS - 3XL

Length: 28" approx



**HC50601**



## Dickies Unisex Tie Waist Trouser

2 pockets, cargo pocket & rear patch pocket

Waist is drawstring front & elasticated at back, false fly detail

Fabric: 65% Polyester 35% Cotton, 145gsm

Sizes: XS - 3XL

Inside leg length: 32"



HC53102 Bootleg trouser also available



**HC11601**

## Dickies Mock Wrap Top

Classic fit mock wrap with contrast colour trim

Side Vents & tie back for extra comfort

Patch Pockets

Fabric: 65% Polyester 35% Cotton, 145gsm

Sizes: XS - 3XL

Length: 28" approx



**86106** Every Day Straps  
**EDS**  
SIGNATURE

## Dickies EDS Signature Natural Rise Tapered Leg Pull-On Trouser

2 patch pockets, 1 red knit interior pocket (White in white)

Empire waist, Instrument loop,

Signature styling, strong and durable, easy care

Fabric: Brushed 55% Cotton, 45% Poly Poplin

Sizes: XS - 2XL standard stock.  
2XS, 3XL - 5XL special order

Leg length: Reg 31", Short 2XS-3XL 28",  
Tall XS-2XL 33.5"



## Dickies EDS Signature V-Neck Top



2 Slash pockets, 2 cargo pockets,  
1 red knit interior pocket (White in white)

Modern classic fit with side  
vents and logo twill tape

Signature styling, strong and durable, easy care

Fabric: Brushed 55% Cotton, 45% Poly Poplin

Sizes: S - 2XL standard stock.  
2XS, 3XL - 5XL special order

Length: Centre Back 26.5"

Matching Trousers shown on P7 86106

## 81906 **EDS** SIGNATURE

## Dickies EDS Signature Men's V-Neck Top

2 Patch pockets, Double chest pocket  
with self strap and D-ring, galaxy blue  
knit interior pocket (white for white)

Back Yoke, centre back seam, side vents

Signature styling, strong and  
durable, easy care

Fabric: Brushed 55% Cotton,  
45% Poly Poplin

Sizes: S - 2XL standard stock.  
3XL - 5XL special order

Length: Centre Back 29"



Matching trousers 81006 available on special order





## GD100

### Mid rise Drawstring Trouser

Cargo pocket, 2 patch pockets, pant back pocket

Side vents, leg opening 16.5"

Two way core stretch, extra soft and durable

Fabric: 80% Polyester, 20% Cotton Stretch Twill

Sizes: XS - 2XL standard stock. 3XL - 5XL special order

Leg length: Reg 31", Short XS-3XL 28.5", Tall XS-2XL 34.5"



## GD300

### Unisex Snap front Jacket

2 large patch pockets

Silver ring snap front closure, Long sleeves, rib knit cuffs

Two way core stretch, extra soft and durable

Fabric: 80% Polyester, 20% Cotton Stretch Twill

Sizes: XS - 2XL standard stock. 2XS, 3XL - 5XL special order

Length: Centre back 29"

## GD600

### Unisex V-Neck Top with front patch pockets

2 patch pockets

Side vents for comfort and ease of movement

Two way core stretch, extra soft and durable

Fabric: 80% Polyester, 20% Cotton Stretch Twill

Sizes: XS - 2XL standard stock. 3XL - 5XL special order

Length: Centre back 26"



## GD640

### Unisex V Neck Top

2 large patch pockets

Side vents for comfort and ease of movement

Two way core stretch, extra soft and durable

Fabric: 80% Polyester, 20% Cotton Stretch Twill

Sizes: XS - 2XL standard stock. 2XS, 3XL - 5XL special order

Length: Centre back 26.5"



## GD120

### Unisex Mid rise Drawstring Trouser

Front and Back patch pockets, side Cargo pocket

Leg opening 16.5"

Two way core stretch, extra soft and durable

Fabric: 80% Polyester, 20% Cotton Stretch Twill

Sizes: XS - 2XL standard stock. 2XS, 3XL - 5XL special order

Leg length: Reg 31", Short 2XS-3XL 28.5", Tall XS-2XL 34"



Navy

Black

Pewter

Royal

Ciel

Surgical Green



**4710**

## Ladies 2 way Core Stretch V-Neck Top

2 patch pockets, interior and back pockets

Front shoulder yokes, I.D. badge slot, a stethoscope loop, pen slot, side vents

Two way core stretch, extra soft and durable with front and back princess seams

Fabric: Brushed 55% Cotton, 42% Polyester, 3% Spandex Twill

Sizes: XS - 2XL standard stock. 2XS, 3XL - 5XL special order

Length: Centre Back 26"



## 4727 Cherokee



## Ladies Core Stretch V-Neck Top

2 patch pockets, right sectional pocket with I.D. loop

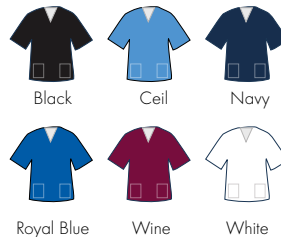
Crossover front yoke, back yoke and princess seams, side vents

Two way core stretch, extra soft and durable

Fabric: Brushed 55% Cotton, 42% Polyester, 3% Spandex Twill

Sizes: XS - 2XL standard stock. 2XS, 3XL - 5XL special order

Length: Centre Back 27"



4728



# Women's Core Stretch Mock Wrap Top 2 Way Stretch



2 patch pockets, right sectional pocket with I.D. loop

---

Front and back princess seams, instrument loop, side vents

---

Two way core stretch, extra soft and durable

---

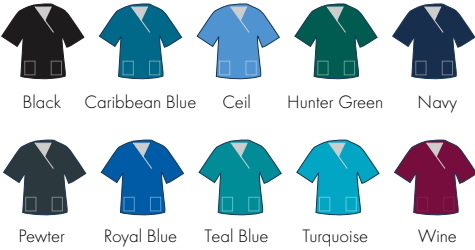
Fabric: Brushed 55% Cotton, 42% Polyester, 3% Spandex Twill

---

Sizes: XS - 2XL standard stock. 2XS, 3XL - 5XL special order

---

Length: Centre Back 27"



WW130



# Cherokee Core Stretch Mid Rise Straight Leg Drawstring Ladies Trouser

2 Angled front pockets, 2 back patch pockets, right interior scissor pocket

---

Side vents, straight leg, leg opening 18.5"

---

Two way core stretch, extra soft and durable

---

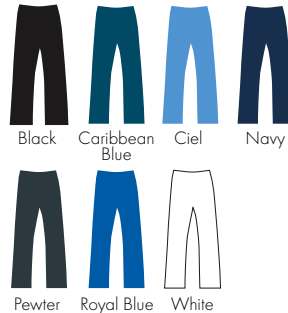
Fabric: Brushed 55% Cotton, 42% Polyester, 3% Spandex Twill

---

Sizes: XS - 2XL standard stock. 2XS, 3XL - 5XL special order

---

Leg length: Reg 31", Short 2XS-2XL 28.5", Tall XS-2XL 34"



4725



# Unisex two way core stretch V-Neck Top

2 patch pockets, chest pocket with instrument holder, mobile/instrument pocket

Back Yoke, side vents

Two way core stretch, extra soft and durable

Fabric: Brushed 55% Cotton, 42% Polyester, 3% Spandex Twill

Sizes: XS - 2XL standard stock. 3XL - 5XL special order

Length: Centre Back 28"



4243



# Men's two way core stretch Cargo Trouser

4 cargo pockets, 2 slash pockets, 1 back patch pocket

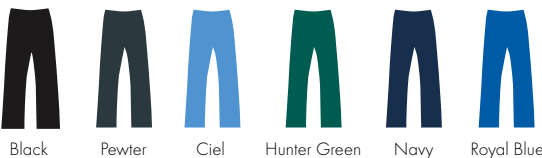
Zip fly, fully elastic waistband, tapered 18" leg

Two way core stretch, extra soft and durable

Fabric: Brushed 55% Cotton, 42% Polyester, 3% Spandex Twill

Sizes: XS - 2XL standard stock. 3XL - 5XL special order

Length: 31" Reg



# WW620



## Revolution V-Neck Stretch Top

2 patch pockets, interior pocket, hidden instrument loop

Front and back princess seams, front shoulder yokes, bungee loop, side vents

Revolution Two way stretch, ultra soft, easy care

Fabric: 78% Polyester, 20% Rayon, 2% Spandex Twill

Sizes: XS - 2XL standard stock. 2XS, 3XL - 5XL special order

Length: Centre Back 27"



# WW110



## Mid Rise Pull-on Cargo Trouser

2 front patch pockets, back patch pockets, cargo pocket, logo label with bungee loop

Elastic reinforced knit waistband, Side vents, straight leg, leg opening 18.5"

Revolution Two way stretch, ultra soft, easy care

Fabric: 78% Polyester, 20% Rayon, 2% Spandex Twill

Sizes: XS - 2XL standard stock. 2XS, 3XL - 5XL special order

Leg length: Reg 31", Short 2XS-2XL 28.5", Tall XS-2XL 34"



WW120 Mid Rise Drawstring Cargo Pant also available

# WW610



## Ladies Revolution Mock Wrap Top

2 patch pockets, interior pocket, hidden instrument loop

---

Long Sleeve, Back Yoke, Knit cuffs, Logo label with bungee loop

---

Revolution Two way stretch, ultra soft, easy care

---

Fabric: 78% Polyester, 20% Rayon, 2% Spandex Twill

---

Sizes: XS - 2XL standard stock. 2XS, 3XL - 5XL special order

---

Length: Centre Back 27.5"

---



# WW310



## Cherokee Revolution Front fastening Warm-up Jacket

2 patch pockets, interior mobile pocket, hidden instrument loop

---

Front and back princess seams, front shoulder yokes, bungee loop, side vents

---

Revolution Two way stretch, ultra soft, easy care

---

Fabric: 78% Polyester, 20% Rayon, 2% Spandex Twill

---

Sizes: XS - 2XL standard stock. 2XS, 3XL - 5XL special order

---

Length: Centre Back 26"

---



# WW670



## WW Revolution Men's V-Neck Top

2 patch pockets, chest pocket with pencil stitch, logo label with I.D. loop

Mens Fit, Back Yoke, side vents

Revolution Two way stretch, ultra soft, easy care

Fabric: 78% Polyester, 20% Rayon, 2% Spandex Twill

Sizes: XS - 2XL standard stock. 3XL - 5XL special order

Length: Centre Back 29"



# WW140



## Cherokee Revolution Men's Fly Front Trouser

2 front patch pockets, back pockets, cargo pockets and accessory pocket

Zip fly, Elastic back waistband with drawstring, straight leg, leg opening 19"

Revolution Two way stretch, ultra soft, easy care

Fabric: 78% Polyester, 20% Rayon, 2% Spandex Twill

Sizes: XS - 2XL standard stock. 3XL - 5XL special order

Leg length: Reg 32", Short XS-2XL 29.5", Tall XS-2XL 35"





4700

# Cherokee Originals V-Neck Unisex Top



Featuring dolman sleeves & side vents

2 patch hip pockets & pen slot

Hard wearing fabric with soil release finish

Fabric: 65% Polyester 35% Cotton, 145gsm

Length: 26.5" approx

Sizes: XS - 3XL standard stock. 2XS, 4XL - 5XL special order

	XS	S	M	L	XL	2XL	3XL
Chest:	30-32"	34-36"	38-40"	42-44"	46-48"	50-52"	54-58"

4100 Cherokee Originals Unisex Cargo Trousers available to order



## SCRUBS Unisex Scrubs Set

2 shoulder pleats & rear vent for ease of movement

2 hip pockets

Trousers with drawstring waist

1 rear right hand pocket

Scrub suit fully reversible

Fabric: 50% Polyester 50% Cotton

Cloth Weight: 145gsm



Size:	XS/8-10	S/10-12	M/14-16	L/18-20	XL/22-24	2XL/26-28	3XL/30-32
Chest:	30-32"	34-36"	38-40"	42-44"	46-48"	50-52"	54-56"
Waist:	26-28"	30-32"	34-36"	38-40"	42-44"	46-48"	50-52"





# CU2016

## Ladies contrast trim tunic

2 shoulder pleats & rear vent for ease of movement

2 hip pockets

Concealed stud/zip fastening

Contrasting piping on collar & sleeves

Fabric: 65% Polyester 35% Cotton

Length: Approximately 28 - 30"

Sizes: 8 - 30



Sky Blue/White

Royal Blue/White

Rosita/White

Navy/Red

Lilac/Purple

Navy/White

White/Navy

Purple/Lilac

# CU305

## Ladies tunic



Hot Pink/White

Purple/White

Black/White

Navy/Red

Honeybird/White

White/Bottle

Navy/White

Sky Blue/White

Lilac/White

Maroon/White

White/White\*

Bottle/White

Royal Blue/White

Hospital Blue/White

Grey Stripe/Maroon

White/Navy

Blue Stripe/White

Red Stripe/Red

Lavender Stripe/Purple

Blue Stripe/Navy

White/Yellow

Grey/Maroon

Aqua/White

Eau de Nil/White

Green Stripe/Bottle

White/Lilac

White/Black

White/Maroon

\*with epaulette supports



2 shoulder pleats & rear vent for ease of movement

2 breast pockets & 2 hip pockets

Contrasting piping on collar, sleeves & pockets

Concealed stud/zip fastening

Fabric: 65% Polyester 35% Cotton

Length: Approximately 28 - 30"

Sizes: 8 - 30

Epaulette supports available on any tunic

## CU105

### Ladies Tunic Short Sleeve

1 breast pocket LHS & 2 hip pockets

Darted front & back for a flattering look

Concealed popped fastening

Contrasting piping on the collar & sleeves

Apollo Fabric: 65% Polyester 35% Cotton

Length: Approximately 29 - 30"

Sizes: 8 - 30



CU106 dress available to view and order on new website



Hospital Blue/White



Bottle/White



White/Maroon



Lilac/White



White/Navy



White/Bottle



Sky/White



Navy/White

## CU915

### Zip Front Tunic

Mandarin collar

Featured front zip

2 hip pockets

2 back darts for shaping

Black, Red, Hot Pink Fabric: 100% Polyester

Hot Pink, Opal Fabric: 65% Polyester 35% Cotton

Length: Approximately 27 - 28"

Sizes: 8 - 30



Black



Red



Hot Pink



Opal

Epaulette supports available on any tunic

## CU2010

### Low Waist Bootleg Trousers

Fashionable low rise bootleg

2 back darts for shaping

Zip and dual button fastening

Easy stretch material for comfort

No pockets

Inside Leg: Approximately Reg 31" & Long 33"

Fabric: 65% Polyester 35% Cotton

Sizes: 6 - 30



## CU410

### Ladies Bootleg Trousers

Easy stretch material for comfort

No pockets

Fabric: 65% Polyester 35% Cotton

Leg length: Approximately 31"

Sizes: 6 - 30

Available in longer length up to 36"



# CU210

## Ladies Trousers

Fully elasticated drawstring waist

---

2 inset hip pockets

---

Sewn-in front creases for a professional look

---

Fabric: 65% Polyester 35% Cotton

---

Inside Leg: Approximately 30"

---

Sizes: 8 - 30

---

Available in longer length up to 36"

---



# CU110

## Ladies Trousers

Tailored style with front darts for a flattering look

---

Side zip & button fastening

---

Half elastic back

---

1 inset hip pocket

---

Inside Leg: Approximately 30"

---

Fabric: 65% Polyester 35% Cotton

---

Sizes: 8 - 30

---

Available in longer length up to 36"

---



**CU100**

## 4 Pocket Vented Dress



2 back shoulder vents for ease of movement

2 breast pockets & 2 hip pockets

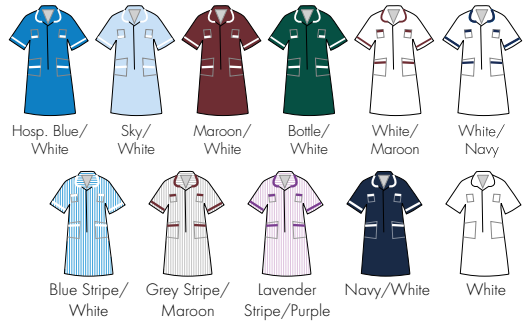
Contrasting piping on collar, sleeves & pockets

Concealed stud/zip fastening

Length: Approximately 45 - 46" hemmed

Fabric: 65% Polyester 35% Cotton

Sizes: 8 - 30



## **DISCONTINUED STYLES LIMITED STOCK AVAILABLE\***

**B806**

## Ladies Step-in Zipped Dress

BUDGET RANGE UNIFORM

2 back shoulder pleats for ease of movement

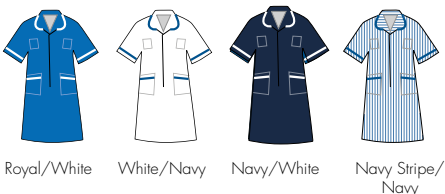
2 breast pockets

2 hip pockets with contrasting piping

Fabric: 65% Polyester 35% Cotton

Length: Approximately 43 - 46"

Sizes: 8 - 30



# CUTT6

Open collar with front crossover  
& contrasting piping

2 side vents for ease of movement

2 hip pockets

Fabric: 65% Polyester 35% Cotton

Length: Approximately 29 - 31"

Sizes: XS - 4XL

	XS	S	M	L	XL	2XL	3XL	4XL
Chest, Waist & Hem:	39"	41"	43"	45"	47"	49"	51"	54"

This is a straight cut tunic, we suggest you measure your widest part eg, chest, hips or waist, to determine which size you should purchase.



White/Navy



Bottle/White



Sky/White



Honeybird/Navy



Eau de Nil/White



Navy/White



# CUTT5 Male Tunic

1 breast pocket LHS & 2 hip pockets

2 shoulder pleats with side vents  
for ease of movement

Concealed stud/zip fastening

Contrasting piping on collar & sleeves

Fabric: 65% Polyester 35% Cotton

Length: Approximately 30 - 31"

Sizes: XS - 2XL



Navy/White



Bottle/White



Hospital Blue/White



Maroon/White



Black/White



Sky/White



White/Navy



White/Bottle

# CUTT

## Male Tunic Top



1 breast pocket LHS & 1 hip pocket

Mandarin collar with side popper fastening

Half back pleated belt

Fabric: 65% Polyester 35% Cotton

Length: Approximately 29 - 31"

Sizes: XS - 4XL



\* CUTTF Ladies surgeon style tunic available to view and order on new website

\*\* CUTT2 open neck tunic top available to view and order on new website



## T20

2 side pockets, jettied hip pocket with button

Zip fly, hook/bar fastening

Sewn in crease

Fabric: 245gsm Polyester/Cotton

Inside Leg: Short 29", Reg 31", Tall 33"

Sizes: 28 - 50" Waist





**PR150**

## Apron

Fabric:  
35% Cotton 65% Polyester

Length: 86cm

For a pocket apron  
please quote PR154

For Chefs Navy Check  
please quote AP1

## CT1 Tabards

Adjustable tabs with stud fastening

Length: Approximately 75cm

D/front pockets

Contrasting piping

Fabric: 65% Polyester 35% Cotton

Sizes: S - XL

CT2 self piped plain tabard stocked in maroon.

Other colours available on request\*

CTNP No pocket tabard available on request\*

\*must be purchased in 3 of a size



Drugs round  
tabard on P29





Other kitchen wear including hats are available

## Chef's Jackets

**DD04E - White Long Sleeve**  
**DD04ES - White Short Sleeve**

Fabric: 50% Polyester 50% Cotton

10 Plastic Buttons

**DD08E - White Long Sleeve**  
**DD08ES - White Short Sleeve**  
**DD08C - Black Long Sleeve**  
**DD08CS - Black Short Sleeve**

Fabric: 65% Polyester 35% Cotton

Long life stainless steel press studs

More Sizes and Colours available on request

Size:	XS	S	M	L	XL	2XL
Chest:	32-34"	36-38"	40-42"	44-46"	48-50"	52-54"



Black



White



Chef's Navy  
Check

## Chef's Trousers

**DC18H - Chefs Navy Check**  
**DC18B - Black**  
**DC18E - White**

More Sizes and Colours available on request

Fully elasticated waist, with drawstring

1 hip and 2 side pockets

Fabric: 65% Polyester 35% Cotton

Size:	XS	S	M	L	XL	2XL
Waist:	24-26"	28-30"	32-34"	36-38"	40-42"	44-46"

wide range of other styles and colours to suit your needs

**SS11**

## Fruit of the loom Pique polo shirt



Also available in Ladies fit SS86 & Children's SS11B

Fabric: 65% Polyester, 35% Cotton  
Taped Neck, Three matching button placket

Reinforced shoulder seams

Cuffed Sleeves, Twin needle stitching

60°C wash, WRAP certified production

Weight: White 170gsm, Colours 180gsm

Size:	S	M	L	XL	2XL	3XL	4XL	5XL
Chest:	35/37"	38/40"	41/43"	44/46"	47/49"	50/52"	53/55"	56/58"



## AA11 Pique Polo

Fabric: 50% Cotton, 50% Polyester

Hardwearing Fabric

Self coloured three button fused placket

Spare Button

Double stitched hem and sleeves

Weight: 190gm<sup>2</sup>

Size:	S	M	L	XL	2XL	3XL	4XL
Chest:	36/38"	40/42"	42/44"	44/46"	48/50"	52/54"	58/60"





**RG122**

## Regatta Thor 3 Unisex Fleece

Fabric: 100% Polyester

Full length zip and two front zip pockets

Fleece cuffs and adjustable drawcord

Weight: 280gsm

Half zip also available quote RG120

Size:	XS	S	M	L	XL	2XL	3XL	4XL
Chest:	35/36"	37/38"	39/40"	41/42"	43/44"	46/48"	49/51"	52/54"



Bottle



Dark Navy



Royal



Glowlight Yellow



Sea Grey



Black



Bordeaux



Classic Red



Oxford Blue

**870F**

## Ladies Outdoor Fleece Jacket

Fabric: 100% Polyester

Anti-pill, dense, compact pile fleece. Unlined

Shaped fit

Collar high full zip and two front zip pockets

Hemmed cuffs and adjustable drawcord hem

Weight: 320gm<sup>2</sup>

Size:	XS	S	M	L	XL	2XL
Chest:	30/32"	32/34"	34/36"	36/38"	38/40"	40/42"



Bottle



French Navy



Bright Royal



Burgundy



Convey Grey



Black



Classic Red



Also available in Mens 870M

# 273M

## Ladies Cardigan

Fabric: 50% Combed Ringspun Cotton/50% Polyester

Drop shoulder style. 6 button cardigan (5 on XS)

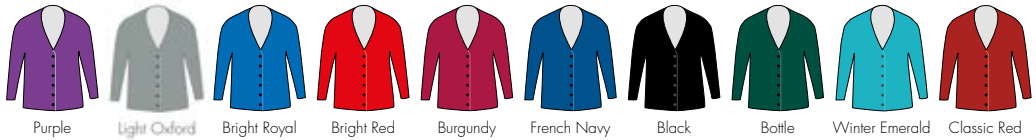
Side seam pockets

Ribbed neckline, cuffs & hem

For children's version please quote 273B

Weight: 295 gsm

Size:	XS	S	M	L	XL
Chest:	34/36"	36/38"	38/40"	40/42"	42/44"



# K701

## Kustom Kit Ladies Short Sleeve Corporate Oxford Shirt

Fabric: 85% Cotton/15% Polyester

Wrinkle resistant finish

Tailored fit with rounded hem & button down collar

Weight: 125gsm

Available in long sleeve K702 & ¾ sleeve K710

Size:	6	8	10	12	14	16	18	20	22	24	26	28
Chest:	28"	30"	32"	34"	36"	38"	40"	42"	44"	46"	48"	50"



K100 Men's versions also available.

# NAME BADGES

Please give us a call for details



## Engraved Badges

Available in Square (as shown above)  
or Rounded edge



## Printed Badges

Add your Company logo and any colour text  
(£10 set up fee for badges with a logo)



## MEDTAB

### Drugs Round Tabard

Drugs round tabard with warning

**Message heatsealed on front and back**

Adjustable tabs with stud fastening

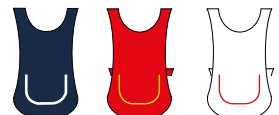
Length: Approximately 75cm

D/front pockets

Contrasting piping and heatseal

Fabric: 65% Polyester 35% Cotton

Sizes: S - XL



Navy/White Red/Yellow White/Red

## SIZING CHART FOR GOODS MANUFACTURED BY CLOISTER UNIFORMS LTD

The below chart is to be used as a guide only and indicates the actual person's measurements not the measurement of the garment.

### CU LADIES GARMENTS

SIZE	EURO	BUST	WAIST	HIPS
8	80	31in/79cm	24in/61cm	34in/86cm
10	84	33in/84cm	26in/66cm	36in/91.5cm
12	88	35in/89cm	28in/71cm	38in/96.5cm
14	92	37in/94cm	30in/76cm	40in/101.5cm
16	96	39in/99cm	32in/81cm	42in/107.5cm
18	100	41in/104cm	34in/86cm	44in/111.5cm
20	104	43in/109cm	36in/91.5cm	46in/117cm
22	108	45in/114cm	38in/96.5cm	48in/122cm
24	112	47in/119cm	40in/101.5cm	50in/127cm
26	116	49in/124.5cm	42in/107.5cm	52in/132cm
28	120	51in/129.5cm	44in/111.5cm	54in/137cm
30	124	53in/135cm	46in/117cm	56in/142cm

### CU MEN'S GARMENTS

SIZE	CHEST (inches)	CHEST (cms)
X Small	34-36"	86-91cm
Small	36-38"	91-96.5cm
Medium	38-40"	96.5-101.5cm
Large	40-42"	101.5-107.5cm
X Large	42-44"	107.5-111.5cm
2X Large	44-46"	111.5-117cm

### RETURNS

If you wish to make a return please ring 01752 345346 for an authorised returns form. This will be sent to you either by email or by post. Please print the returns form and enclose with your parcel. Please note, unless there is an error with an order all postage needs to be paid by the customer ensuring a receipt of postage is obtained. If you prefer we can send a courier to collect your goods, however a cost of £10 + VAT will be charged. Please ring on the above number if you would like to book a collection. Please see below for return fees.

Returns up to 14 days	Full Credit of goods (excludes carriage)
Returns 15-30 days	£4.95+VAT re-stocking fee
Returns 31-59 days	30% Handling fee & £4.95+VAT re-stocking fee

If goods are returned washed, worn, embroidered or damaged and not in the original condition they were sent out in, they will be returned with an invoice for postage & packing.

## EMBROIDERY

Our in house embroidery and heatseal design department specialise in logos for all types of businesses, using the latest 'punching' and embroidery equipment for a quick and quality assured service.

Embroidery/heatseal fees - logo set up with acceptable artwork from £30+vat, set up for writing from £5+vat. Application costs start from £2.50+vat per garment. (discounted price only applies to multiples of same design. The logo may be requested and used elsewhere, but fees will apply).

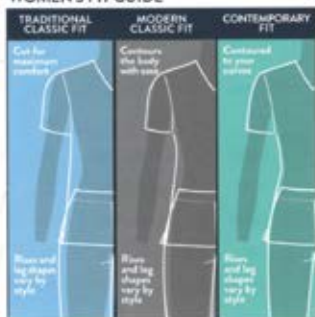
When an embroidery or heatseal has been confirmed and signed off application will proceed and no further corrections or claims will be accepted, as personalised goods are non-returnable.

OWN GOODS - we will happily embroider/heatseal any goods you wish to have personalised however we do not hold any responsibility for them.

# SCRUB SIZING CHART

## FIT GUIDES

### WOMEN'S FIT GUIDE



### MEN'S FIT GUIDE



### PANT WAIST FIT GUIDE



### PANT LEG FIT GUIDE



### WOMEN'S MEASURING GUIDE



BUST

WAIST

HIPS

INSEAM

Measure under the arms around the fullest part of the bust/chest.

Measure under the natural waistline, loosely holding the tape measure.

Standing with feet together, measure around the fullest part of the hips.

Measure along the inside of the leg, from just below the crotch to 1" below the ankle.

### MEN'S MEASURING GUIDE



CHEST

WAIST

HIPS

INSEAM

## MODERN CLASSIC/CONTEMPORARY FIT

	XXS	XS	S	M	L	XL	2XL	3XL	4XL	5XL
UK SIZE	2-4	6-8	10-12	14-16	18-20	22-24	26-28	30-32	34-36	38-40
US SIZE	0	2-4	6-8	10-12	14-16	18-20	22-24	26-28	30-32	34-36
BUST	31-32	33-34	35-36	37-39	40-43	44-47	48-51	52-55	56-59	60-63
WAIST	23-24	25-26	27-28	29-31	32-35	36-39	40-43	44-47	48-51	52-55
HIPS	33-34	35-36	37-38	39-41	42-45	46-49	50-53	54-57	58-61	62-65

Inseam: Regular 30.5, Petite 28, Tall 33.5

## UNISEX FIT

	XS	S	M	L	XL	2XL	3XL	4XL	5XL
UK SIZE	6-8	10-12	14-16	18-20	22-24	26-28	30-32	34-36	38-40
US SIZE	2-4	6-8	10-12	14-16	18-20	22-24	26-28	30-32	34-36
CHEST	33-34	35-37	38-40	41-44	45-48	49-52	53-56	57-60	61-64
WAIST	25-26	27-29	30-32	33-36	37-40	41-44	45-48	49-52	53-57
HIPS	34-35	36-38	39-41	42-45	46-49	50-53	54-57	58-61	62-65

Inseam: Regular 31, Short 28.5, Tall 34

## MEN'S FIT

	XS	S	M	L	XL	2XL	3XL	4XL	5XL
CHEST	33-35	36-38	39-41	42-45	46-49	50-53	54-57	58-61	62-65
WAIST	24-26	27-29	30-32	33-36	37-40	41-44	45-48	49-52	53-57
HIPS	33-35	36-38	39-41	42-45	46-49	50-53	54-57	58-61	62-65

Inseam: Regular 32, Short 29.5, Tall 35





---

**Cloister Uniforms Ltd**

---

[www.cloister-uniforms.co.uk](http://www.cloister-uniforms.co.uk)